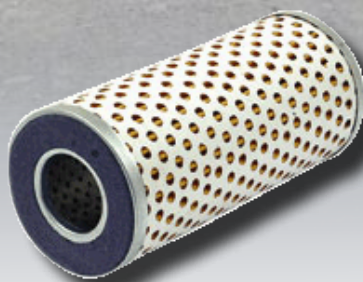


Replacement parts for

Ferguson TEA 20





AgSpares® is a family business which was established in 1983 to supply local farmers with tractor parts. The company is now an established Supplier of AgSpares® new and used tractor parts to Tractor Dealerships and Farmers throughout New Zealand and Overseas.



Postal:

PO Box 4009
Kamo
Whangarei 0141

Delivery:

30 Pipiwai Road
Kamo
Whangarei

Free Phone:

0800 788 788

Contact:

Phone: +64 (09) 437 9036
Fax: +64 (09) 435 4536
Email: sales@agspares.co.nz
Web: www.agspares.co.nz

Index:

Cooling	3
Front axle	4
Steering	5
Engine Parts	6
Fuel	8
Clutch	9
Electrics	10
Panels & Decals	12
Paint	12
Hydraulics	13
Brakes	13
Rear axle	13
Rear Linkage	14
PTO	14



Order online...

www.agspares.co.nz/overview

2





- | | | |
|----|-------|--|
| 1 | E0024 | Top Hose |
| 2 | E0027 | Bottom Hose |
| 3 | E0028 | By Pass Hose |
| 4 | E0030 | Air Cleaner to Dash Hose |
| 5 | E0031 | Air Cleaner to Carb -Intake Pipe |
| 6 | E0032 | Carb to intake pipe -Stepped
(If Late type 28G carb fitted use E31 straight hose) |
| 7 | E0033 | Breather Pipe to Air Cleaner |
| 8 | E4131 | Hose Kit -Water Hoses only |
| 9 | E0040 | Fan Belt -Std 80mm Bore, (Water pump on block) |
| | E0041 | Fan Belt -85mm Bore, (Water pump on Head) |
| 10 | E0036 | Thermostat |
| 11 | E0037 | Thermostat Housing |
| 12 | E0038 | Water Pump |
| 13 | E1233 | Seal -Water pump |
| 14 | E2543 | Radiator |
| 15 | E0596 | Radiator Cap |

Front Axle



1	E0004	Front Axle Bolt
2	E0003	Front Axle Nut
3	E0002	Radius Rod Bolt
4	E0003	Radius Rod Nut
5	E0009	Stub Axle LH
	E0010	Stub Axle RH
6	E0013	Kingpin Repair Kit (1 side includes 2 bushes & thrust bearing)
7	E0014	Wheel Bearing & Seal Kit (1 side includes 2 bearings/seal)
8	E1364	Keyed Washer 3/4"
9	E0016	Nut -Hub Retaining 3/4"
10	E0015	Wheel Hub
11	E0017	Hub Cap
12	E0018	Wheel Stud
13	E0019	Wheel Nut
14	E0007	Axle Pivot Pin
15	E0005	Axle Pivot Bush



1	E0020	Front Ball Joint LH & RH
2	E0021	Rear Ball Joint LH & RH
3	E1345	Ball Joint Rubber Boot
4	E0144	Steering Wheel-Standard Type
5	E0144SP	Steering Wheel-Steel Spoke Type
6	E1432	Chrome Nut
7	E1433	Chrome Washer
8	E4132	Chrome Dust cover
9	E4133	Seal -Steering Box Drop arms
10	E1199	400 x 19 Front Tyre
11	E0510	400 x 19 Front Rim
12	E3673	400 x 19 Front Tube

Can use 600 x 16 Rims & Tyres. Although these are wider, they are about the same overall diameter and will bolt straight on to a standard Ferguson hub.

13	E1196	600 x 16 Front Tyre
14	E0511	600 x 16 Front Rim
15	E3674	600 x 16 Tube
17	E0000	600 x 16 Wheel complete
18	E0145	Steering Wheel Spinner

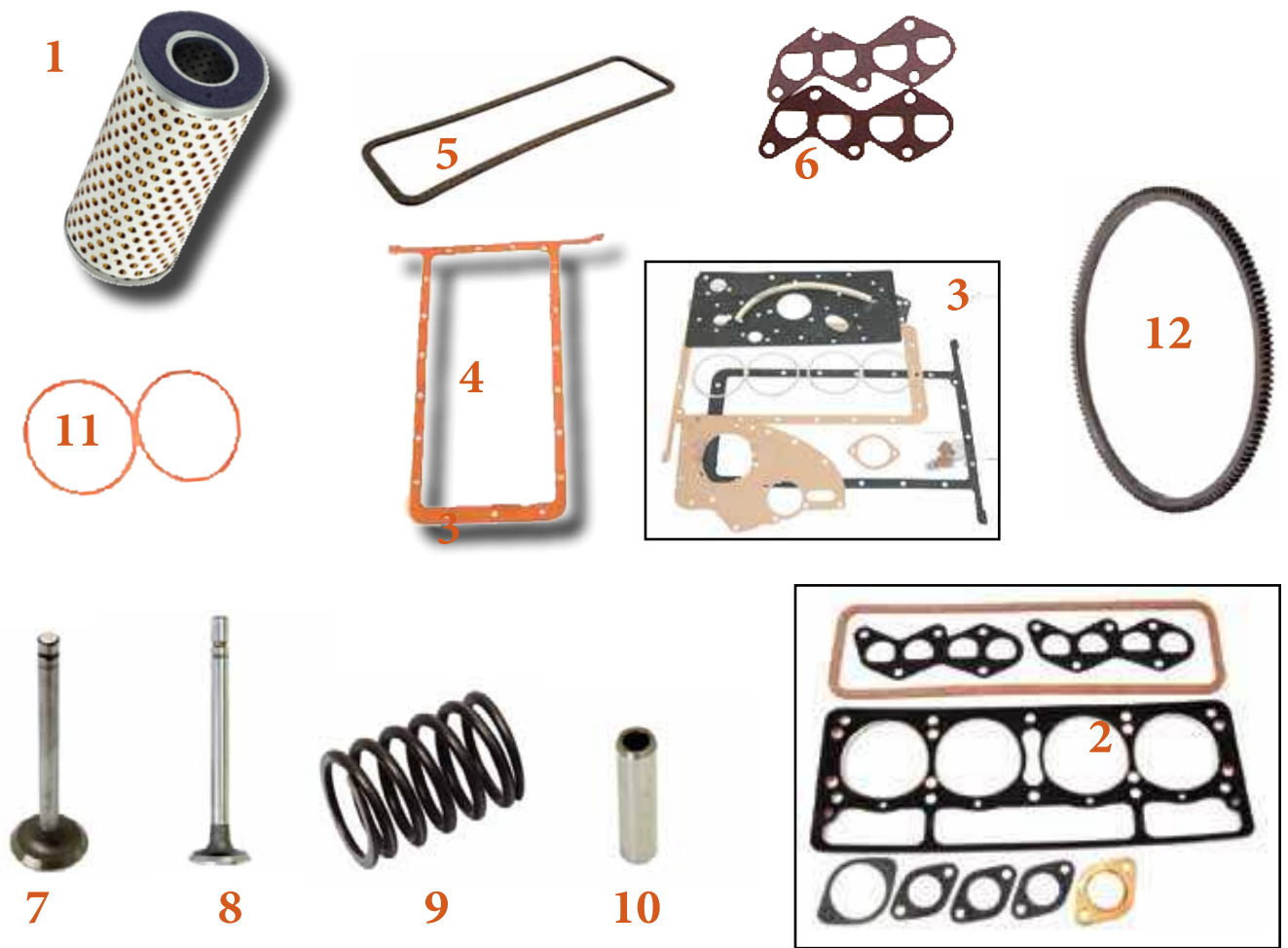


ENGINE OVERHAUL KITS

"MINOR KITS" - FOR IN-FRAME REPAIR. Includes - Pistons, Gudgeon Bushes, Piston Rings, Liners, Con Rod Bearings, Con Rod Lock Nuts (where fitted), Top & Bottom Gasket Sets.

"MAJOR KITS" - FOR OUT OF FRAME REBUILD. Includes ALL of the above PLUS - Main Bearings, Thrust Washers, Front & Rear Seals.

		<u>80MM BORE</u> (water pump on block 6volt)
1	E0051	Minor Kit (up rates engine to 85mm spec)
	E0052	Major Kit (up rates engine to 85mm spec)
		<u>85MM BORE</u> (water pump on head mostly 12volt)
	E0053	Minor Kit
	E0054	Major Kit
2	E0060	Ring Set only (per cyl) 80mm bore
	E0061	Ring Set only (per cyl) 85mm bore
3	E0067	Main Bearings
4	E0064	Conrod Bearings
5	E0074	Oil Pump Rotor Assembly
6	E0073	Rear Engine Seal
7	E0043	Front Timing Cover Seal
8	E0047	Cup & Shaft
9	E0046	Governor Weight Assembly
10	E0049	Cam Shaft Sprocket
11	E0050	Crank Shaft Sprocket
12	E0045	Timing Cover Gasket
13	E0048	Timing Chain
14	E4134	Timing Cover



- | | | |
|----|-------|---|
| 1 | E1634 | Engine Oil Filter |
| 2 | E0085 | Top Gasket Set Suits 85 & 80mm Bore Engines |
| 3 | E0087 | Bottom Gasket Set |
| 4 | E0094 | Sump Gasket |
| 5 | E0093 | Rocker Cover Gasket |
| 6 | E0095 | Exhaust Manifold Gasket (1 Pair) |
| 7 | E0078 | Exhaust Valve -80mm Bore |
| | E0079 | Exhaust Valve -85mm Bore |
| 8 | E0078 | Inlet Valve -80mm Bore |
| | E0077 | Inlet Valve -85mm Bore |
| 9 | E0083 | Valve Spring -Inlet & Exhaust |
| 10 | E0081 | Valve Guide |
| 11 | E0092 | Cylinder Liner Gasket (2 Required) |
| 12 | E0075 | Ring Gear -12Volt Models |

Exhaust System



- | | | |
|----|---------|------------------------------------|
| 1 | E0111 | Exhaust Clamp |
| 2 | E0112 | Rain Cap |
| 3 | E0096 | Exhaust Elbow |
| 4 | E0097 | Gasket -Exhaust Elbow |
| 5 | E0101 | Muffler (Vertical) |
| 5 | E0101HD | Hush Muffler -Ultra Quiet |
| 6 | E0105 | Muffler (Down Swept, Horizontal) |
| 7 | E0109 | Exhaust Down Pipe |
| 8 | E0095 | Gasket -Exhaust Manifold |
| 9 | E3834 | Exhaust Manifold |
| 10 | E3739 | Needle & Seat -24t2 Carburettor |
| 11 | E3738 | Float -Zenith 24t Carburettor |
| 12 | E3740 | Gasket Set -Zenith 24T Carburettor |
| 13 | E3741 | Gasket Set -Zenith 28G Carburettor |
| 14 | E3657 | Carburettor Zenith 24T2 |
| 15 | E2509 | Repair Kit for 24T2 Carburettor |
| 16 | E2508 | Repair Kit for 28G Carburettor |

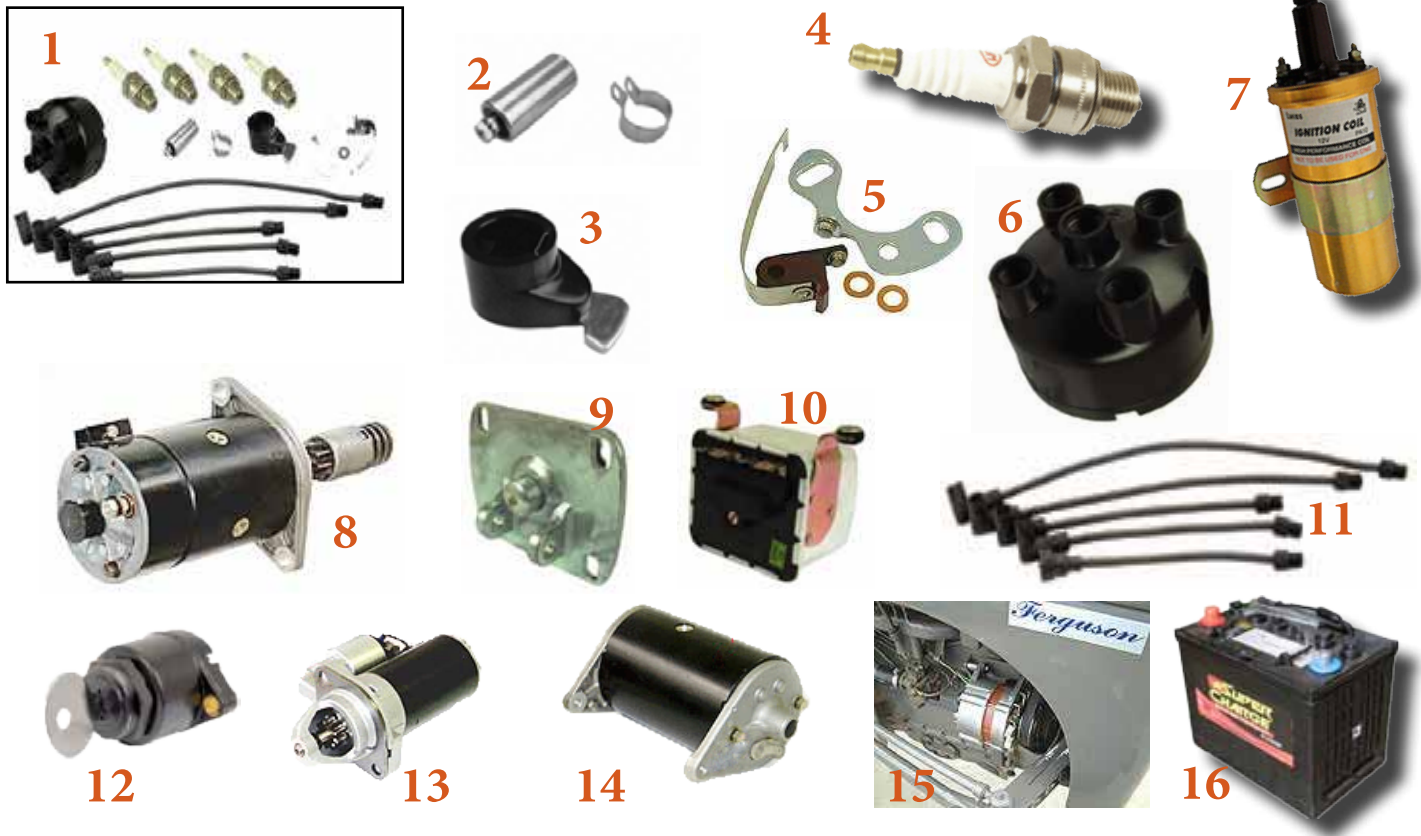


Fuel, Transmission & Clutch



- | | | |
|----|-------|--|
| 1 | E3658 | Fuel Tank |
| 2 | E4135 | Brass Fuel Cap |
| 3 | E3130 | Fuel Tap Assembly |
| 4 | E2968 | Fuel Bowl 54mm |
| 5 | E2507 | Gasket -Fuel Bowl 54mm |
| | E2906 | Gasket -Fuel Bowl 50mm |
| 6 | E0149 | Gear Lever Boot |
| 7 | E0181 | Seal -Main Drive Input Shaft |
| 8 | E0151 | Crank Handle |
| 9 | E3665 | Clutch Kit |
| | | (Includes Cover Assembly , Main Plate, Thrust Bearing & Pilot Bearing) |
| | E0161 | Clutch Cover Assembly 9" |
| | E0163 | Main Plate 9" x 1 ³ / ₈ " x10 Spline |
| | E0166 | Thrust Bearing |
| | E0165 | Pilot Bearing |
| 10 | E4136 | Oil Presure Gauge (White Face) |
| | E0134 | Oil Presure Gauge (Black Face) |
| 11 | E0135 | Ammeter Gauge |
| 12 | E0136 | Water Temperature Gauge |

Ignition Parts



1	E4137	Full Ignition Kit
2	E0116	Condenser
3	E0114	Rotor
4	E0119	Spark Plug
5	E0115	Points
6	E0113	Distributor Cap
7	E0117	12 Volt Coil
8	E0126	Starter Motor 12v
9	E0120	Starter Switch
10	E0123	Voltage Control Box -12v (Push in Terminals)
11	E0118	HT Lead Set
12	E4138	Key Switch
13	E2566	6 to 12 Volt Conversion Starter Motor
	E3659	12 Volt Conversion Kit to fit most 6 Volt Models
14	E0129	12 Volt Generator
15	E4153	Alternator Conversion Kit
16	MF50	Battery -Super Charge

Lights, Paint & Seats



- | | | |
|----|--------|---|
| 1 | E4139 | Ferguson Owners Manual |
| 2 | E1134 | Ferguson Workshop Manual |
| 3 | E3475 | Head Lamp Assem -LH |
| | E3476 | Head Lamp Assem -RH |
| 4 | E4142 | Lighting Kit -3 Lamps, 1 Switch |
| 5 | E4141 | Marker Lamp LH/RH -Red/Clear Lens |
| 6 | E4140 | Bracket -Butler Side Lamp |
| 7 | E0141 | Spray Can -Ferguson Stoneleigh Gray |
| | E2511 | Ferguson Light Grey -1 Litre |
| | E0138 | Ferguson Stoneleigh Grey -1 Litre |
| | E3339 | Ferguson Stoneleigh Grey -4 Litre |
| | E0139 | Massey Ferguson Red -1 Litre |
| | E3338 | Massey Ferguson Red -4 Litre |
| | E3678 | Primer/Undercoat -4 Litre |
| | E0140 | Thinners -4 Litre |
| 8 | E4012 | Seat Cushion (Fits Original Ferguson seat E0152S)
Available Black, Red/White, Blue/White |
| 9 | E0152S | Seat Pan Original Type |
| 10 | E0152 | Seat Pan -Zinc Plated |
| 11 | E3663 | Seat Pan -Upholstered |
| 12 | E3660 | Wiring Harness |

Tool box, Decals & Panels



- | | | |
|----|--------|--|
| 1 | E4143 | Bonnet Assembly Complete |
| | E4144 | Bonnet -Upper |
| | E4145 | Pair of Side Panels |
| 2 | E0150 | Bolt Bonnet Pivot |
| 3 | E2941S | Rear Guards -Steel |
| | E2941F | Rear Guards -Fibreglass |
| 4 | E4146 | Bonnet Rubber |
| 5 | E4147 | Bonnet Stay |
| 6 | E4148 | Ferguson Metal Badge -Front Bonnet |
| 7 | E3662 | Ferguson Side Name Plate |
| 8 | E0197 | Mudguard Bolt -Standard |
| | E0197L | Mudguard Bolt -Long (Models with Safety Frame) |
| 9 | E3896 | Pair of Grilles |
| 10 | E3897 | Front Grille -T Piece |
| 11 | E2565L | LH Footplate |
| | E2565R | RH Footplate |
| 12 | E0146R | Tool Box -Red |
| | E0146 | Tool Box -Black (Water Proof) |

Rear Axle, Brakes, Wheels & Hydraulics



1	E1192 E2219	Rear Tyre 12.4/11x28 Rear Tyre 11.2/10x28	12	E0207	Gasket -Inner Axle Hsg
2	E3675	Rear Rim 9x28	13	E0206	Gasket -Axle Housing
3	E0213	Bolt -Rim to Disc	14	E1992	Link Pin -Tapered Shank
4	E0212	Rear Wheel Nut	15	E1863	Gasket -Side Plate
5	E0211	Rear Wheel Stud	16	E3395	Gasket -Hyd Lift cover
6	E0214	Brake Lining Set (With Rivits)	17	E3396	Gasket -Hyd Pump Base
7	E1877	Brake Shoe Set	18	E0203	Seal -Inner Axle
8	E1879	Brake Drum	19	E0201	Seal -Outer Axle
9	E4149	Spring	20	E0208	Collar -Locking
10	E0215	Spring -4 Required	21	E1207	Bearing -Rear Axle (Cup & Cone)
11	E4150	Brake Equalilzers	22	E4151	Friction Disc -Hydraulic Control Lever
			23	E2424	Control Valve -Hyd Pump
			24	E4152	Major Hydraulic Repair Kit

3 Point Linkage & PTO



1	E1980	Plow Arm
2	E2007	Stabilizer Bracket -LH
	E2008	Stabilizer Bracket -RH
3	E2018	Stabilizer Pin
4	E2023	Pin & Clevis -Plow Arm
5	E3929	Lynch Pin -Std 11mm
6	E0551	Yoke -LH Dropper
7	E0542	Level Box Assembly
8	E3671	Draw Bar Stay -Upper (2 Req)
	E3672	Draw Bar Stay Lower (2 Req)
9	E1977	Top Link Pin 19x75mm
10	E2012	Stabilizer Bar -Adjustable
	E0366	Stabilizer Bar -Rigid
11	E3670	Hinge Pin
12	E2005	9 Hole Drawbar
13	E3744	Overrun Clutch 1-3/8"
14	E3677	PTO Adaptor 6 Spline 1-1/8" to 1-3/8"
15	E2426	PTO Seal 38x66x22
16	E0218	PTO Shaft 1-3/8" Conversion
17	E0220	PTO Cap (Cover)
18	E2414	Towball 1-1/8"

Some of the tractors we are keeping in action...



McCormick CX100 -Morrinsville

"Supplied Roll frame, Dash Parts, Starter Motor and Paint"

New Holland TL90A

"Supplied Front end loader, Engine Filters LH Door Glass and Mirror"



Ford 4610 -Whangarei

"Supplied New Tyres, Muffler, Suspension Seat, Rear Guard Lights, Paint and Decals"

Ford 4600 -Ruakaka

"Supplied Clutch Kit, Seat, Decals, Front Grille, Rear Guards, Brake Pedals and Filters"



David Brown 880 -Waiheke Island

"supplied Tie-Rod ends, Decal Set, Gaskets, Toplink, and Bypass Hose"

Massey Ferguson 135

-Kamo "Supplied Paint, Decals, Front wheels, Filters, Panels & Gauges"



Massey Ferguson 275 -Taranaki

"Supplied Suspension Seat, Paint, Decal Set, Engine Parts, Front Grille and Headlights, Precleaner Unit"

Ferguson TEA -Hikurangi

"Supplied Wheels, Steering Wheel, Paint, Seat, Footplates and Spark Plug Kit"



Ferguson Tractor Models

TE20 Standard built tractor with Continental Z-1 20 engine, 1946-48
TEA20 Standard built tractor with Standard engine, petrol, 1947-56 **(New Zealand)**
T020 Standard built tractor with Continental Z-120 engine 1948-51
TEB20 Standard built tractor with Continental engine, narrow, 1946-48
TEC20 Standard built tractor with Standard engine, narrow, 1948-56
TED20 Standard built tractor with V.O. Standard engine, 1949-56
TEE20 Standard built tractor with V.O. Standard engine, narrow 1949-56
TEF20 Standard built tractor with Standard diesel engine 1951-56 **(New Zealand)**
T030 Standard built tractor with Continental Z-129 engine 1951-54
TEH20 Standard built tractor with Standard zero octane engine, 1950-56
TEJ20 Standard built tractor with Standard Z.O. engine, narrow, 1950-56
TEK20 Standard built tractor with Standard diesel engine, Vineyard, 1952-56
TEL20 Standard built tractor with Standard V.O. engine, Vineyard, 1952-56
TEM20 Standard built tractor with Standard Z.O. engine, Vineyard, 1952-56
TEP20 Standard built tractor with Standard petrol engine, Industrial, 1952-56
TER20 Standard built tractor with Standard V.O. engine, Industrial, 1952-56
TES20 Standard built tractor with Standard Z.O. engine, Industrial, 1952-56
TET20 Standard built tractor with Standard diesel engine, Industrial, 1952-56

TEA 20 MODELS -Identification

(Fergy 24) 80mm 6 volt = water pump on block (has mesh screen on top of aircleaner)
(Fergy 28) 85mm 12 volt = water pump on head (has air cleaner intake through dash)

Engine Specifications

Model	Cylinders	Bore x Stroke	cc	Fuel	HP
Continental Z120	4	81mmx95mm	1966	Gasoline	23.9
Continental Z129	4	3.25"x3.875"	2113	Gasoline	30.27
Standard	4	80mmx92mm	1850	Gasoline	23.9 (New Zealand)
Standard	4	85mmx92mm	2088	Gasoline	28.2 (New Zealand)
Standard	4	80.96x101.6mm	2092	Diesel	26.0 (New Zealand)

Specifications

Headtorque setting 65 ft lb
Main bearing torque setting 90 ft lb
Conrod bearing torque setting 50 ft lb
Inlet valve clearance010"
Exhaust valve clearance012"
Firing order..... 1,3,4,2
Sparkplug gap -030 to -032
Points gap -014" to 016"
Engine Oil..... 15w40 (6.8Litres)
Hydraulic/Transmission Oil..... Super Trac (22.8 Litres)

SERIAL NUMBERS MODEL & YEAR

YEAR	START	END
1946	1	315
1947	316	20894
1948	20895	77772
1949	77773	116461
1950	116462	241335
1951	167837	241335
1952	241336	310779
1953	310780	367998
1954	367999	428092
1955	428093	488578
1956	488579	517651



P: +64 (09) 437 9036
F: +64 (09) 435 4536
E: sales@agspares.co.nz
W: www.agspares.co.nz
0800 788 788